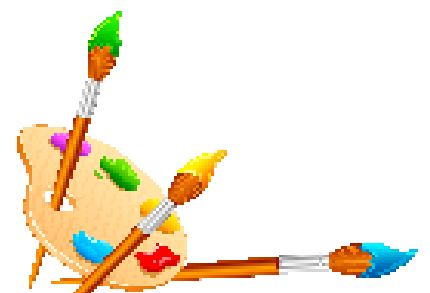


Marsh Green Primary School



Art and Design Policy

Written by: Catherine Holland



Achieve Believe Celebrate

We believe that Art should enable pupils to explore their creativity, stimulate their imagination and develop a special way of understanding, enjoying and responding to the world.

Art stimulates creativity and imagination. It provides visual, tactile and sensory experiences. It enables children to communicate what they see, feel and think through the use of colour, texture, form, pattern and different materials and processes. They learn to make informed judgments and aesthetic and practical decisions. They explore ideas and meanings through the work of artists and designers. Through learning about the roles and functions of art, they can explore the impact it has had on contemporary life and that of different times and cultures. The appreciation and enjoyment of the visual arts enriches all our lives.

Aims

At Marsh Green school we aim to provide an education in Art that:

- Fosters an enjoyment and appreciation of the visual arts and a knowledge of artists, craftspeople and designers.
- Develops increasing confidence in the use of visual and tactile elements and materials.
- Improves the children's ability to control and understand materials, tools and techniques.
- Enables children to record from first-hand experience and from imagination, and to select their own ideas to use in their work.
- Increases their critical awareness of the roles and purposes of art and design in different times and cultures.
- Delivers a rich supportive environment where children feel confident to experiment with different media.
- Encourages children to evaluate their own ideas and methods, and the work of others, and say what they think and feel about them.

Organisation

Art is a foundation subject in the National Curriculum. At Marsh Green we use the national scheme of work as the basis for our curriculum planning Art. We have adapted the national scheme to our local circumstances along with use of the Access Art split curriculum teaching a range of pathways. Whenever possible, we use the local environment within aspects of our work and incorporate this in outdoor learning.

We carry out the curriculum planning in Art in three phases: long-term, medium-term and short-term. Our long-term plan maps out the themes covered in each term during the key stage over the academic year.

Activities are planned so that they build upon the prior learning of the children. Children of all abilities are given the opportunity to develop their skills, knowledge and understanding, with planned progression which ensure an increasing challenge.

Achieve Believe Celebrate

The school uses a variety of teaching and learning styles in Art and Design lessons. We do this best through a mixture of whole-class teaching and individual/group activities. We give children the opportunity within lessons to work on their own and collaborate with others, on projects in two and three dimensions and on different scales. Children also have the opportunity to use a wide range of materials and resources, including ICT.

We celebrate children's work through classroom displays, whole school displays, WOWS bi-annual art exhibitions, twitter and our school website.

Health and Safety: The general teaching requirement for health and safety applies in this subject. Teachers will carry out a risk assessment before each activity, considering their tools, materials and equipment being used. Before undertaking practical tasks, children should be taught to use tools correctly to ensure safety.

Home School Links: Parents are an invaluable source of skills and information and may be invited to demonstrate and teach their skills or may indirectly share their skills through assisting with Art lessons. Opportunities should be available for children at home to investigate and practice skills, research information, and use computing where possible.

Assessment and Recording

We assess the children's work in Art whilst observing them working during lessons, verbal feedback and group crits, but do not keep formal records or make assessments of National Curriculum levels.

Resources

We have a wide range of resources to support the teaching of art and design across the school. All our classrooms have a range of basic resources and additional supplies are kept in the art and design store which is accessible to children only under adult supervision. More specialised equipment is ordered as required.

Monitoring and Review

The monitoring of the standards of children's work and of the quality of teaching in art and design is the responsibility of the subject leader. The work of the subject leader also involves supporting colleagues in the teaching of art and design, being informed about current developments in the subject, and providing a strategic lead and direction for the subject in the school.